

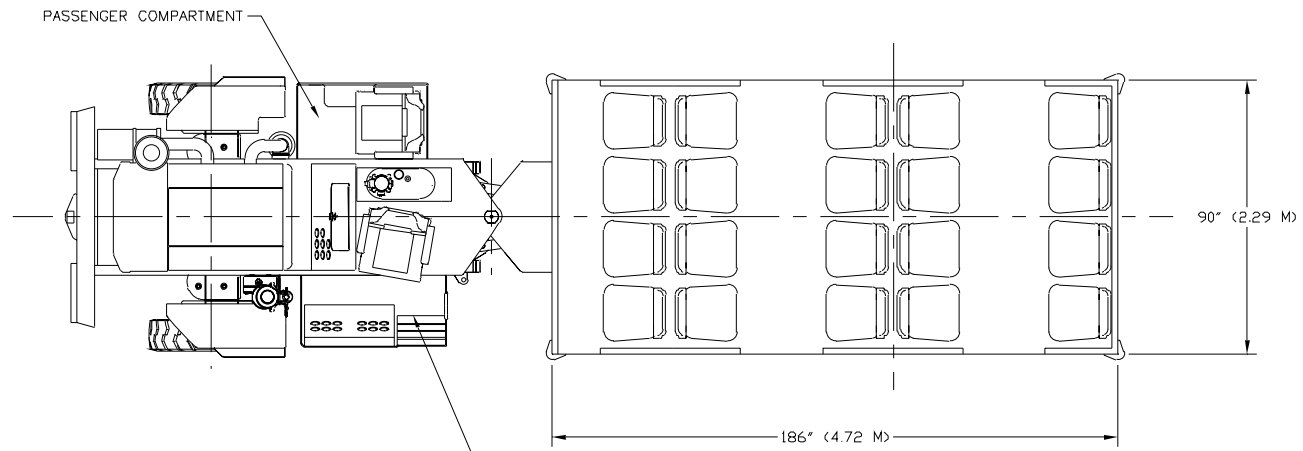
performance • reliability • innovation

Mine-Mate™ Series

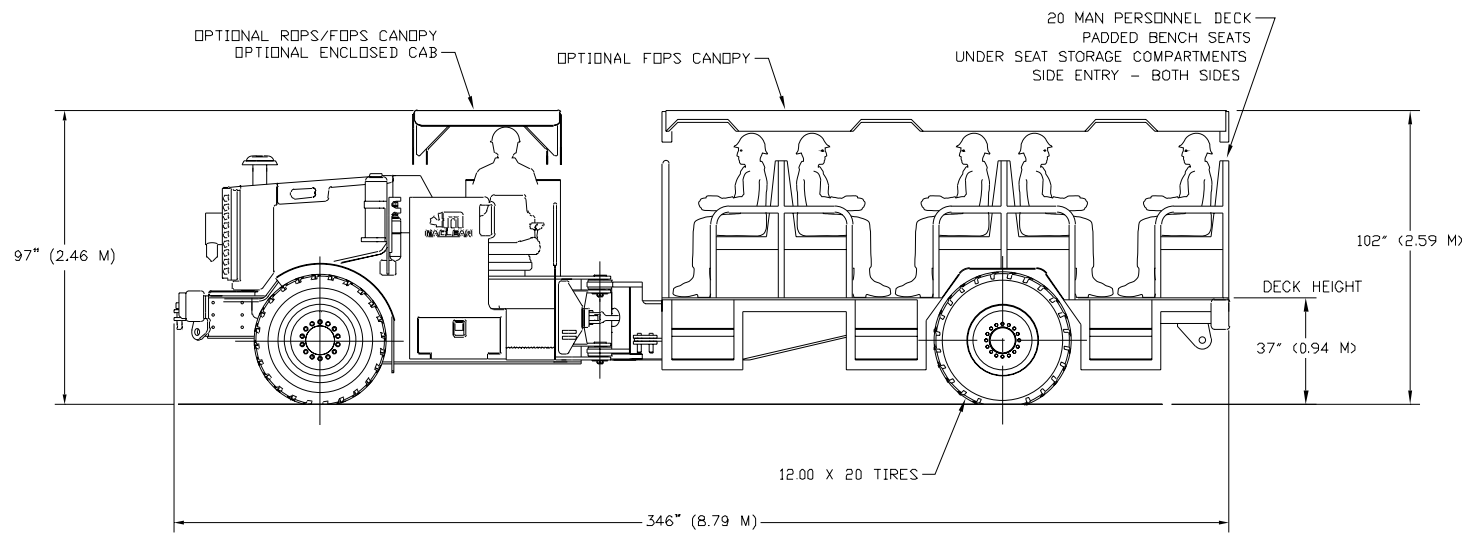
PC-3 Personnel Carrier



MacLean Engineering designs, develops, and supplies specialty equipment to meet the needs of the mining industry. We provide "best in class" product support that includes commissioning, training and after sales service.



DRIVER COMPARTMENT



Shown with optional equipment included

Weights and Dimensions

Empty vehicle weight: 28,000 lbs (12,700 kg)
Width: 90" (2.29 m)
Length: 346" (8.79 m)
Tramming height: 97" (2.46 m)

+/- 40 degrees steering angle
Inside turning radius: 255" (6.48 m)
Outside turning radius: 366" (9.30 m)



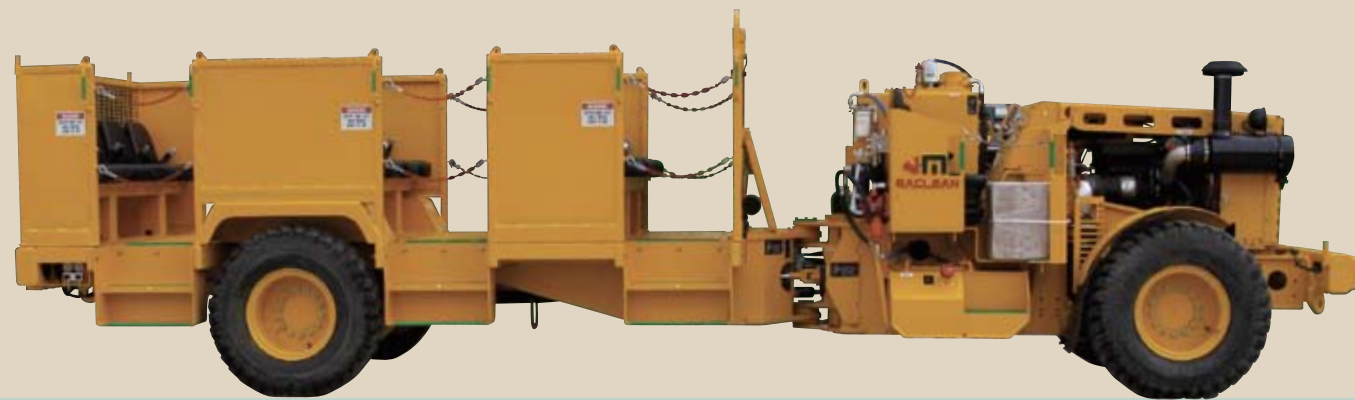
www.macleaneengineering.com

Sales and Product Support

1067 Kelly Lake Road
Sudbury, Ontario Canada P3E 5P5

Main Office: +705.670.8014
Customer Service: 1.866.856.3626
Facsimile: +705.670.8023
Email: sales@macleaneengineering.com

Team Player.



Where time is at a premium and travel distances long, the rugged Mine-Mate™ PC-3 Personnel Carrier provides a comfortable, rapid transportation system for passengers and material to and from work places in underground trackless mines.

Features

- Available in 14-22 passenger configurations
- Adaptable as auxiliary transport vehicle
- Unique suspension system
- Heavy duty frame construction
- Reliable, proven power train components
- High-powered, electronically controlled engine
- Four wheel drive carrier
- Canopy and enclosed cab option

PC-3 Personnel Carrier



The MacLean Advantage:

- ➔ Fast, efficient and safe personnel transportation system
- ➔ Secure, comfortable ride from standard chassis suspension
- ➔ Dual-purpose vehicle for passengers and/or materials
- ➔ Long life power train using proven components
- ➔ Ease of maintenance with electronic engine diagnostics, accessible fuel filling and grease points
- ➔ Clean burning, fuel-efficient engine minimizes harmful emissions
- ➔ Superior traction due to four wheel drive and powershift transmission

Applications

- Trackless mines where large crews travel long distances to work places from shaft stations
- Surface to multi-level destinations via mine ramp systems