



## PC-3 Personnel Carrier

Where time is at a premium and travel distances long, the rugged Mine-Mate™ PC-3 Personnel Carrier provides a comfortable, rapid transportation system for passengers and material from work places in underground trackless mines.

### Features

- Available in 14-22 passenger configurations
- Adaptable as auxiliary transport vehicle
- Unique suspension system
- Heavy duty frame construction
- Reliable, proven power train components
- High-powered, electronically controlled engine
- Four wheel drive carrier
- Canopy and enclosed cab option

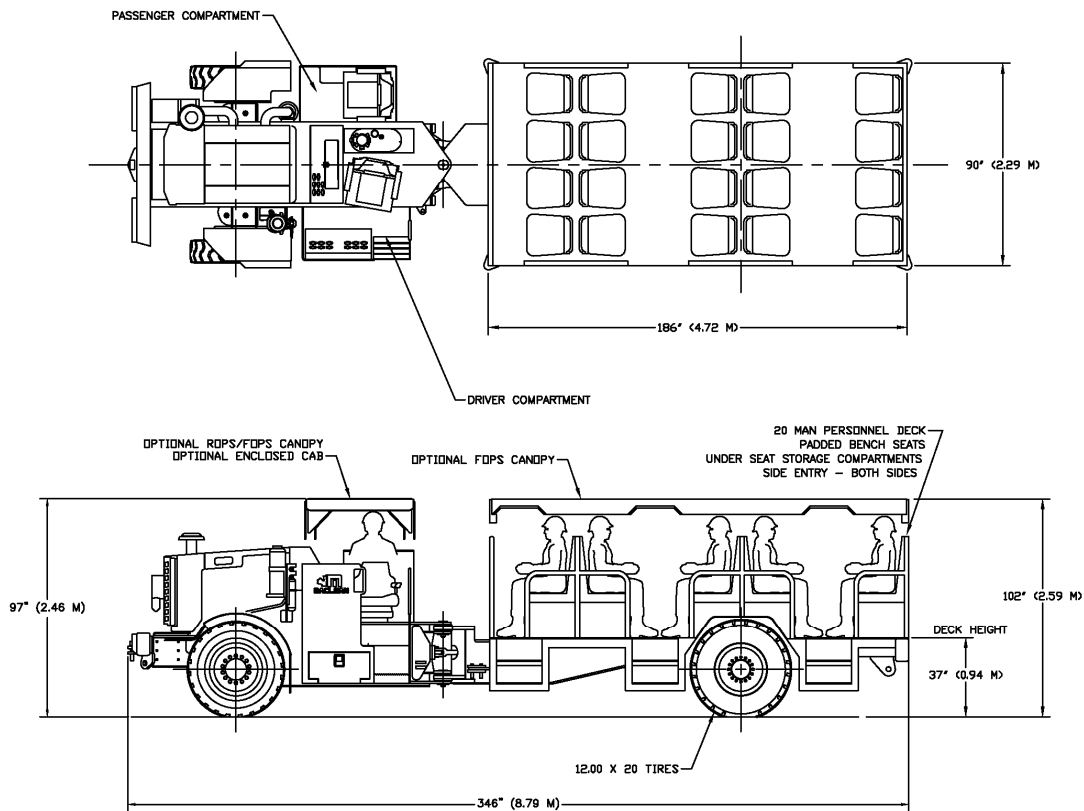
### Benefits

- Fast, efficient and safe personnel transportation system
- Secure, comfortable ride from standard chassis suspension
- Dual-purpose vehicle for passengers and/or materials
- Long life power train using proven components
- Ease of maintenance with electronic engine diagnostics, accessible fuel filling and grease points
- Clean burning, fuel-efficient engine minimizes harmful emissions
- Superior traction due to four wheel drive and powershift transmission

### Applications

- Trackless mines where large crews travel long distances to work places from shaft stations
- Surface to multi-level destinations via mine ramp systems

# Naclean Mine-Mate



Shown with optional equipment included

## Weights and Dimensions

Empty vehicle weight – 28,000 lbs (12,700 kg)  
 Width - 90" (2.29 m)  
 Length - 346" (8.79 m)  
 Trimming height - 97" (2.46 m)

+/- 40 degrees steering angle  
 Inside turning radius - 255" (6.48 m)  
 Outside turning radius - 366" (9.30 m)

## Speed Range

Mercedes / Clark / New Holland Power Train

- 1<sup>st</sup> gear on flat – 2.3 mph (3.6 km/h)
- 2<sup>nd</sup> gear on flat – 4.8 mph (7.7 km/h)
- 3<sup>rd</sup> gear on flat – 8.3 mph (13.3 km/h)

Caterpillar Power train

- 1<sup>st</sup> gear on flat – 2.8 mph (4.5 km/h)
- 2<sup>nd</sup> gear on flat – 4.8 mph (7.7 km/h)
- 3<sup>rd</sup> gear on flat – 8.7 mph (14.0 km/h)

# Maclean Mine-Mate



## **Power End Standard Equipment**

Mercedes 904 liquid cooled diesel engine:

- Rated 147 hp (110 kW) at 2300 rpm – MSHA certified
- 4 cylinder – 4 stroke – Electronically controlled
- Turbo charged / Air to air charge cooled
- Mesabi radiator and cooling package
- 40 US gal (150 L) diesel tank

Dana Clark 32000 series powershift transmission;

- 3 speeds forward and reverse
- Electric shift control

New Holland D65I axles;

- Inboard planetary gears
- No-spin differential on engine side
- Standard differential on boom side
- Mico SAHR failsafe brake actuators
- Internal wet disk brakes
- +/- 10 degrees oscillation on power end axle
- Fixed mounting on application end axle

Brake system;

- Independent front/rear hydraulically operated service brakes
- Spring applied, hydraulic released emergency/park brakes
- Automatic Brake Application (ABA) with manual reset

Wheels and Tires;

- 12.00 x 20 tire size
- 20 ply pneumatic, lugged thread design

Driver and passenger compartments;

- Side entry away from articulation joint
- Driver's position – Center seated facing outward
- Passenger position – Side seated facing forward
- Deluxe suspension seats with seat belts for driver and passenger
- Stick steering controls
- Anti-slip dimple plate on all step surfaces

Frames:

- Heavy duty plate construction with modular tear down capability
- 40 degrees steering angle with dual steering cylinders
- Grouped grease fittings for articulation joint, steering pins and oscillating axle
- Heavy duty front and rear bumpers with towing capability
- Articulation lock bar
- Wheel chock holders

Hydraulic system;

- Closed center hydraulic circuit
- 30 gpm (110 L/min) piston pump
- 3000 psi (200 bar) system pressure
- 25 US gal (95 L) hydraulic tank
- 10 micron return filter

Electrical system;

- 24 Volt with master disconnect with lock out feature
- 95 amp / 24 volt alternator
- 800 CCA batteries
- 500 amp fuse starter protection
- Re-settable circuit breakers
- 6 headlights forward and 4 reverse
- Back-up alarm
- Strobe light
- Stainless steel enclosures

Exhaust system;

- Purifier and muffler assembly
- Insulation blankets on exposed components
- Emission test port

# Maclean Mine-Mate



## **Passenger Compartment Standard Equipment**

- 20 person rear passenger compartment
- Individually padded seats
- Seat belts
- Suspension system on rear frame
- Dual side entry points with steps
- Easily accessible 3-point contact entrances
- High side panels
- Under seat storage compartments
- Removable seating (for material transport)

## **Optional Equipment**

Mercedes 906 engine upgrade;

- Rated 201 hp (150 kW) at 2300 rpm – MSHA certified
- 6 cylinder – 4 stroke – Electronically controlled

Caterpillar power train components;

- Cat C6.6 rated 156 hp (116 kW) or 213 hp (158 kW) at 2300 rpm
- 6 cylinder – 4 stroke – Electronically controlled
- Cat 535C powershift transmission
- Cat 938G drive axles

Exhaust blankets and shielding

Certified ROPS & FOPS open canopy

Certified ROPS & FOPS enclosed cabin;

- Heating and AC systems
- Pressurized air and sound suppression
- Windshield wiper and washer systems

Fire suppression, Checkfire, and hand held extinguisher

Auto lube system

Choice of tires;

- Pneumatics, solids and filled
- Aircraft retreads

Alternate seating arrangements and capacity

- 16 Person (4 rows x 4 seats)
- 12 Person (3 rows x 4 seats)

FOPS open canopy for rear passenger compartment

FOPS enclosed cab for rear passenger compartment

Heating system for rear compartment

Emergency steering system

Additional options available upon request

## **Manuals and Warranty**

Parts, Operators and Maintenance manuals

- 3 sets of hardcopies
- "Catbase" or "Link One" electronic parts books
- French and Spanish parts manuals available

MAC-10 Warranty

- 1 year standard warranty
- Extended to 2 years on power train
- Extended to 7 years on frame

\*The manufacturer reserves the right to change the specifications or design of this machine at any time without notification.