



## AC-3 ANFO Charger

The Mine-Mate™ AC-3 is a safe, reliable and cost effective solution for quality explosives charging of bulk ANFO in underground trackless mines.

### Features

- Up to 3,000 lbs (1360 kg) ANFO carrying capacity
- Single or dual tank configurations
- Compact multi-stage extension boom
- Two person basket with wide face coverage
- Ample storage for blasting accessories
- Two stabilizing jacks
- Heavy duty frame construction
- Clean high powered, electronically controlled engines
- Reliable, proven power train components
- Four wheel drive, articulated steer carrier
- Canopy and enclosed cab option

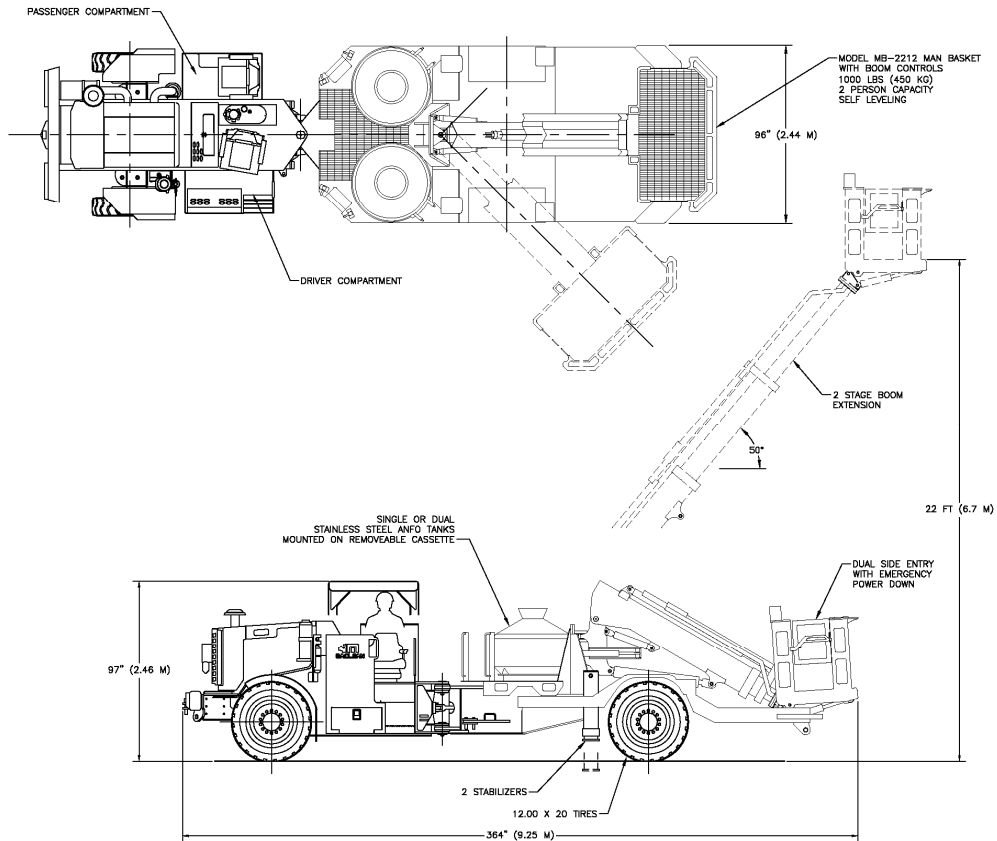
### Benefits

- Complete drift coverage from single set-up
- One or two person operation
- Rapid tramming between work locations
- Cost benefits in materials handling and in use of bulk explosives
- Clean burning, fuel-efficient engine minimizes harmful emissions
- Ease of maintenance with electronic engine diagnostics, accessible fuel filling and grease points
- Superior traction due to four wheel drive and powershift transmission

### Applications

- Production blasthole and long hole charging
- Development drifting and breasting
- Bulk ANFO transport
- Accurate explosives charging for precision blasting

# Naclean **One-Mate**



Shown with optional equipment included

## Weights and Dimensions

Empty vehicle weight – 35,000 lbs (15,900 kg)  
 Width- 96" (2.44 m)  
 Length – 364" (9.25 m)  
 Trimming height – 97" (2.46 m)

+/- 40 degrees steering angle  
 Inside turning radius – 227" (5.77 m)  
 Outside turning radius – 335" (8.51 m)

## Speed Range

Mercedes / Clark / New Holland Power Train

- 1<sup>st</sup> gear on flat – 2.3 mph (3.6 km/h)
- 2<sup>nd</sup> gear on flat – 4.8 mph (7.7 km/h)
- 3<sup>rd</sup> gear on flat – 8.3 mph (13.3 km/h)

Caterpillar Power train

- 1<sup>st</sup> gear on flat – 2.8 mph (4.5 km/h)
- 2<sup>nd</sup> gear on flat – 4.8 mph (7.7 km/h)
- 3<sup>rd</sup> gear on flat – 8.7 mph (14.0 km/h)

# Maclean Mite-Mate



## **Power End Standard Equipment**

Mercedes 904 liquid cooled diesel engine;

- Rated 147 hp (110 kW) at 2300 rpm – MSHA certified
- 4 cylinder – 4 stroke – Electronically controlled
- Turbo charged / Air to air charge cooled
- Mesabi radiator and cooling package
- 40 US gal (150 L) diesel tank

Dana Clark 32000 series Powershift transmission;

- 3 speeds forward and reverse
- Electric shift control

New Holland D65I axles;

- Inboard planetary gears
- No-spin differential on engine side
- Standard differential on boom side
- Mico SAHR failsafe brake actuators
- Internal wet disk brakes
- +/- 10 degrees oscillation on power end axle
- Fixed mounting on application end axle

Brake system;

- Independent front/rear hydraulically operated service brakes
- Spring applied, hydraulic released emergency/park brakes
- Automatic Brake Application (ABA) with manual reset

Wheels and Tires;

- 12.00 x 20 tire size
- 20 ply pneumatic, lugged thread design

Driver and passenger compartments;

- Side entry away from articulation joint
- Driver's position – Center seated facing outward
- Passenger position – Side seated facing forward
- Deluxe suspension seats with seat belts for driver and passenger
- Stick steering controls
- Anti-slip dimple plate on all step surfaces

Frames;

- Heavy duty plate construction with modular tear down capability
- 40 degrees steering angle with dual steering cylinders
- Grouped grease fittings for articulation joint, steering pins and oscillating axle
- Heavy duty front and rear bumpers with towing capability
- Articulation lock bar
- Wheel chock holders

Hydraulic system;

- Closed center hydraulic circuit
- 30 gpm (110 L/min) piston pump
- 3000 psi (200 bar) system pressure
- 25 US gal (95 L) hydraulic tank
- 10 micron return filter

Electrical system;

- 24 Volt with master disconnect with lock out feature
- 95 amp / 24 volt alternator
- 800 CCA batteries
- 500 amp fuse starter protection
- Re-settable circuit breakers
- 6 headlights forward and 4 reverse
- Back-up alarm
- Strobe light
- Stainless steel enclosures

Exhaust system;

- Purifier and muffler assembly
- Insulation blankets on exposed components
- Emission test port

# Maclean Mine-Mate



## **Application End Standard Equipment**

Heavy duty hydraulic aerial lift;

- Two stage compact boom
- 34 ft x 24 ft (10.3 m x 7.3 m) face coverage
- 38" x 72" (0.97 m x 1.83 m) two person basket
- 1000 lbs (450 kg) basket payload capacity
- Hydraulic cylinders with load holding valves
- Emergency power down from basket

High powered HID flood lights

Two 16" (0.41 m) stroke stabilizing jacks

## **Optional Equipment**

Mercedes 906 engine upgrade;

- Rated 201 hp (150 kW) at 2300 rpm – MSHA certified
- 6 cylinder – 4 stroke – Electronically controlled

Caterpillar power train components;

- Cat C6.6 rated 156 hp (116 kW) or 213 hp (158 kW) at 2300 rpm
- 6 cylinder – 4 stroke – Electronically controlled
- Cat 535C powershift transmission
- Cat 938G drive axles

Certified ROPS & FOPS open canopy

Certified ROPS & FOPS enclosed cabin;

- Heating and AC systems
- Pressurized air and sound suppression
- Windshield wiper and washer systems

Fire suppression, checkfire, and hand held extinguisher

Exhaust blankets and shielding

Auto lube system

## **Manuals and Warranty**

Parts, Operators and Maintenance manuals

- 3 sets of hardcopies
- "Catbase" or "Link One" electronic parts books
- French and Spanish parts manuals available

Stainless steel ANFO tank;

- 750 lbs (340 kg) or 1000 lb (450 kg) tank size with remote loading controls
- Tank mounted on removable cassette
- 3 point contact from ground level
- Vibrator mount on tank side

Stainless steel piping and anti-static loading hose

Storage for blasting accessories

Choice of tires;

- Pneumatics, solids and filled
- Aircraft retreads

Dual tank configuration

Dual loading systems

Upgrade ANFO tanks to;

- 1200 lbs (540 kg)
- 1500 lbs (680 kg)

Engine end jacks

Brake inter-locking for stabilizer jacks

Air operated hydraulics and/or alternator

Remote engine start from basket

"Explosives" back lit sign

Additional options available upon request

MAC-10 Warranty

- 1 year standard warranty
- Extended to 2 years on power train
- Extended to 7 years on frame

\*The manufacturer reserves the right to change the specifications or design of this machine at any time without notification.