



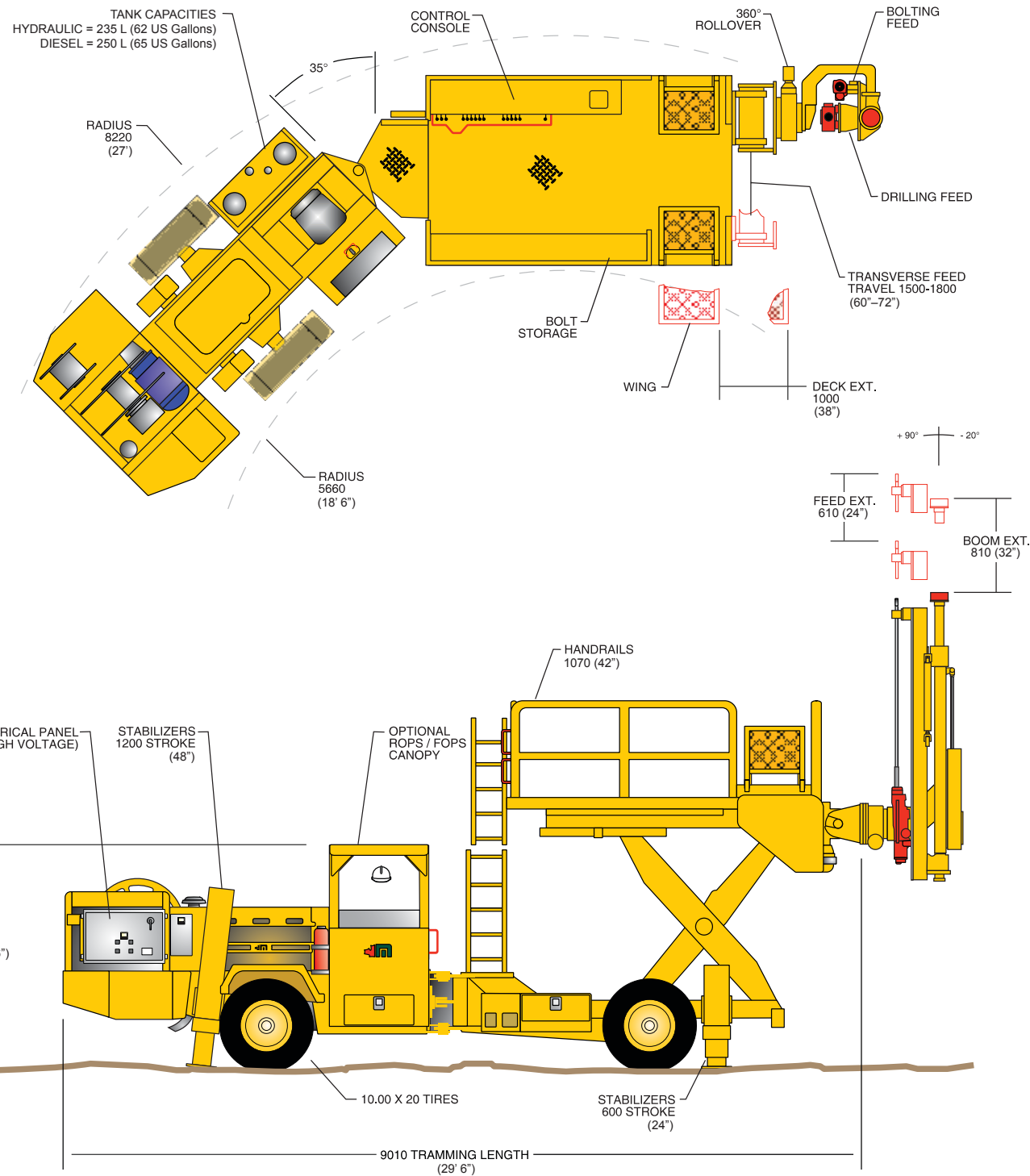
performance • reliability • innovation

Mine-Mate™ Series

Series-900 Scissor Bolter



MacLean Engineering designs, develops, and supplies specialty equipment to meet the needs of the mining industry. We provide "best in class" product support that includes commissioning, training and after sales service.



Weights and Dimensions

Length:	9010 mm (29' 6") tramming 10400 mm (34' 1") boom deployed	Turning radius:	5660 mm (18' 6") (Inner) 8220 mm (27') (Outer)
Width:	2290 or 2590 mm (7' 6" to 8' 6") on application	Shipping weight:	22,000 kg (48,500 lbs)
Height:	2590 mm (8' 6") with ROPS or Cab		



www.macleaneengineering.com

Sales and Product Support

1067 Kelly Lake Road
Sudbury, Ontario Canada P3E 5P5

Main Office: +705.670.8014
Customer Service: 1.866.856.3626
Facsimile: +705.670.8023
Email: sales@macleaneengineering.com

Overhead Protection.



Features

- Self-propelled, high speed four wheel drive articulated carrier
- Electric hydraulic control system with remote drive system
- Hydraulic positioning, rock drilling/bolting systems
- Operating protocol prevents exposure to loose rock hazards
- Multiple types of bolts can be installed (rebar, mechanical anchor, friction bolts)
- Long hole drilling capability
- Proven heavy duty scissor lift mechanism
- High capacity storage for bolting supplies
- 2000 lbs (900 kg) deck payload capacity
- Forward shifting hydraulic deck

Series-900 Scissor Bolter

First introduced in 1984, the MacLean Scissor Bolter has evolved into a complete ground support system for underground hard rock mines. The benefits of safety, productivity, versatility and quality of installation combine to provide the ideal tool for the mine development cycle and rehabilitation operations.



The MacLean Advantage:

- ➔ All operations carried out from beneath supported ground
- ➔ Physical effort and fatigue are minimized compared to traditional rock bolting methods
- ➔ The scissor bolter is designed for single person operation
- ➔ Transverse feed enables drilling and bolting of a complete ring from a single set up
- ➔ Single pass drilling allows for rapid installation of bolts
- ➔ Versatility

